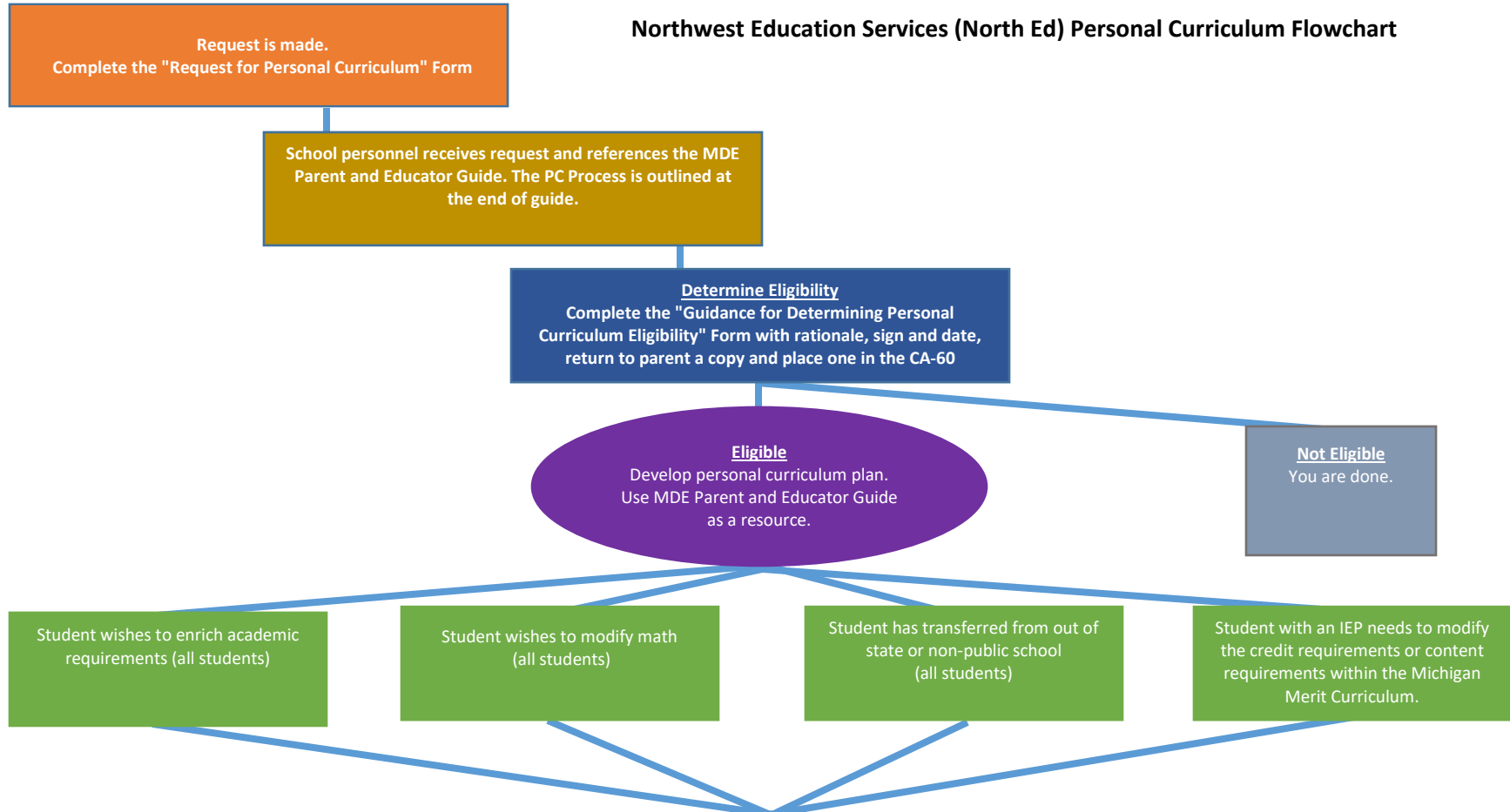


### Northwest Education Services (North Ed) Personal Curriculum Flowchart



Superintendent or designee **approves the plan**. Copy of plan is provided to parents, placed in CA-60 and recorded in PowerSchool  
 OR  
 Superintendent or designee **does not approve the plan**. Copy of plan is provided to parents, placed in CA-60 and recorded in PowerSchool

*\*The local school is responsible to provide annual notice of Personal Curriculum Processes. Please see MDE Parent and Educator Guide for acceptable ways to do this.*